



THE GERMAN SHEPHERD DOG
CLUB OF ATLANTA, INC.

THE GUARDIAN

The German Shepherd Dog Club of Atlanta

WAS FOUNDED WHEN A SMALL GROUP OF BREEDERS AND OWNERS INTERESTED IN THE GSD MET IN ATLANTA, GA. OUR FIRST CLUB PRESIDENT WAS MRS. MICHELLE LEATHERS BILLINGS. THE CLUB'S PURPOSE WAS, AND REMAINS, THE IMPROVEMENT OF THE BREED. THE CLUB BECAME A NONPROFIT ORGANIZATION CHARTERED IN GEORGIA IN 1974, THE GERMAN SHEPHERD DOG CLUB OF ATLANTA, INC.



71 YEARS OF DEDICATION

B PRESIDENT DANIAL PICKNELL
O VICE PRESIDENT JOHN CONELY
A TREASURER JUSTIN MOORE
R SECRETARY REN LEWIS
D MEMBER-AT-LARGE MINDI KELLEY-CHASE
MEMBER-AT-LARGE HILARY BORETZ
PAST PRESIDENT JUSTIN MOORE
NEWSLETTER EDITOR TANYA JONES

CLUB INFO.....	3
EDUCATIONAL.....	4
GETTING TO KNOW US.....	8
RECENT EVENTS.....	9
UPCOMING EVENTS.....	10
BREEDER REFERRALS.....	11
PARENT CLUB INFO.....	12
APPLICATIONS.....	13
ADVERTISEMENTS.....	14
STUD ADS.....	16

C O N T E N T S

HIGHLIGHTS

NEXT MEETINGS: JAN 31ST & FEB 14TH

EDUCATIONAL SEMINAR: FEB 15TH

UKC SHOWS: FEB 27TH, 28TH & MAR 1ST (CLOSES 2.25)

CLUB SPECIALTY SHOWS: APR 17TH & 18TH (CLOSES 4.1)



NEW MEMBER APPLICATIONS: LEWIS FAMILY (EMILY, BRYAN, AND ZION)

The German Shepherd Dog Club of Atlanta, Inc.



NEWSLETTER PUBLICATIONS OPPORTUNITIES

OUR NEWSLETTERS AND WEBSITE
OFFER ADVERTISING OPPORTUNITIES AT
AFFORDABLE COSTS.

THESE OUTLETS ARE A GREAT WAY TO
CONNECT WITH A LARGER AUDIENCE
FROM AN ESTABLISHED SOURCE.

IF YOU ARE INTERESTED IN ADVERTISING
POSSIBILITIES FOR YOU/YOUR BUSINESS,
FEEL FREE TO REACH OUT.

Club 2025/2026 Schedule

Date	Day	Note Worthy
August 16th	Saturday	11am - Eagles Beak Park, 8250 Old Federal Rd, Ball Ground 30107. 1st meeting of new year, General Meeting
September 20th	Saturday	Outdoor/park TBD General Meeting
October	No club meeting	GSD National
November 22nd	Saturday	Call in, 11am General Meeting & finalizing Winter shows
December	No club meeting	Club Christmas Party - TBD
January 31st	Saturday	location TBD General Meeting
February 14th	Saturday	Outdoor/park TBD General Meeting Outdoor/park TBD
March 14th	Saturday	President appoints Nominating Committee for the purpose of selecting a slate of nominees for the elective offices and directorships for upcoming Club Year
April 11th	Saturday	General Meeting & finalizing spring shows TBD
May TBD	Saturday	Additional nominations can be made at the May meeting by any Active Member in attendance for the elective offices and directorships for upcoming Club Year.
June TBD	Saturday	TBD Designated Annual meeting, held in the month of June, at which Officers and Directors shall be elected for the ensuing year. Elected Officer(s) shall take office immediately upon the conclusion of the June meeting and retiring officer overturns all items related to office by July 1st.
July TBD	TBD	Club Award Banquet - TBD

Advertise in our Guardian Newsletter

Commercial Advertising Rates *

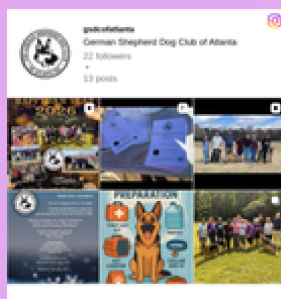
Size	Monthly Rate	Quartly Rate	Yearly Rate
Full Page	\$17.00	\$27.50	\$50.00
Half Page	\$10.00	\$22.50	\$32.50
Quarter Page	\$7.50	\$15.00	\$22.50
Business Card	\$5.00	\$7.50	\$12.50
3" Business Card	\$5.75	\$9.50	\$17.50
4" Business Card	\$6.75	\$11.00	\$22.50

Non-Commercial Advertising Rates *

	Members	Non-Members
Front Page	\$12.50	N/A
Back Cover	\$12.50	N/A
Stud Dog	\$6.00/yr	N/A
Breeder/Service	\$6.00/yr	N/A
Whelpng Box	1 Free Litter per/yr	N/A
Full Page	\$12.50	\$17.50
Half Page	\$7.50	\$12.50
Quarter Page	\$6.50	\$10.00

* Design is extra and based on time spent

Ads copy and photos should be sent to the [Newsletter Editor](#)



German Shepherd Dog Club of Atlanta

Learn the fundamentals of the German Shepherd breed, what constitutes the proper diet, how to groom and more by attending our monthly educational programs.
gsdofatlanta.org

DID YOU KNOW?

- GSD'S ARE 1 OF 6 BREEDS UTILIZED FOR U.S. DETECTION WORK
- THERE IS A SHORTAGE OF U.S. BRED DETECTION DOGS
- YOU CAN HELP YOUR BREED TO HELP KEEP THE U.S. SAFE
- THERE IS AN AKC DETECTION DOG TASK FORCE SOUTHEAST REGIONAL SEMINAR IN RALEIGH-DURHAM, NC



AMERICAN
KENNEL CLUB®

AKC® Detection Dog Task Force



AKC® Detection Dog Task Force (DDTF)

The American Kennel Club (AKC) is proud to advocate for and advance purpose-bred dogs that have the skills, ability and breeding needed to address the shortage of U.S. bred detection dogs and meet future challenges.

Three Focus Areas:

1

PUBLIC POLICY

to improve government policy & purchasing practices (Government Relations)



2

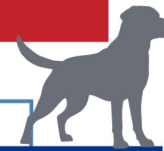
RAISING AWARENESS & ADVANCING KNOWLEDGE

through hosting conferences, webinars & in person regional seminars to bring together breeders, buyers and the public to share best practices and create solutions

3

BREEDER EDUCATION

to help U.S. breeders produce high quality U.S. bred, raised and trained detection dogs (includes the Patriotic Puppy Program)



Patriotic Puppy Program (PPP)

Mission: Decrease U.S. dependence on foreign suppliers of dogs by supporting domestic efforts to provide suitable detection dog candidates.

About: Specialized program that provides one-on-one training and assistance to breeders/puppy raisers interested in learning how to raise a puppy suitable for sale/placement in advanced training as a detection dog. The program focuses on Labrador Retrievers and German Shorthaired Pointers, two of the most sought-after breeds.

175+

PPP graduates
deployed in the USA

Includes over seven agencies (CBP, ATF, DOD, TSA, Capitol Police, Pentagon, USDA), state & local law enforcement, and private security companies.

46 states have PPP
participants

6 breeds represented

Labrador Retriever • German Shorthaired Pointer
Chesapeake Bay Retriever • German Shepherd Dog
English Springer Spaniel • Bloodhound

THERE ARE ONLY A SMALL NUMBER OF PROGRAM PARTICIPANTS IN RELATION TO THE TASK AT HAND. THERE IS AN EVEN SMALLER REPRESENTATION OF



OUR VERY CAPABLE GSD BREED DEPLOYED AS DETECTION DOGS. How can you help?

SAVE THE DATE



When it comes to the bad guys who threaten public safety, it can be a real puzzle trying to know who they are or how to protect your community and those you love. Why? Because there's no easy way to identify the bad people and what they look like. For example, when you're walking down a street, watching a parade, or looking at people standing in a line-up at the local Police Department, most look like ordinary citizens. Some will have long hair, a beard, or a dirty t-shirt; others in a dress or sport coat, and maybe a tie. But nothing about their appearance confirms that one of them is the bad guy.

Recent events at our schools, New York City, and New Orleans confirm that the bad guys can walk among us and go unnoticed. In most of these situations what helps is having a game changer, one that can tip the scales and change the odds. Now we have one, it's the canine with 300 million scent receptors, as opposed to the measly 1 million in the human olfactory system. Detection canines are changing the odds and there is little doubt about their ability to detect the Improvised Explosive Device (IED), a droplet

of scent in a swimming pool, or their ability to find a trace of drugs on the street after a rain—or their skill in finding people buried under rubble.

Given their remarkable abilities, it is clear we need more detection dogs, especially when it comes to our safety, and saving lives after a disaster.

Proper breeding and training is crucial to the success of a detection dog. If a court case results, the issue is likely to be about collecting the evidence and how it was discovered and cataloged at the crime scene. Success sometimes will depend on whether the dog was properly trained or if the handler used the authorized legal procedures. Each situation and crime scene is different. At the end of the day, success boils down to good breeding, puppy development, training, and the willingness to improve.

Using dogs to help us is not new. Some of the most recent efforts date back to 1918, when Germany had more than 20,000 dogs trained for their military and France had more than 15,000. Over time, many countries cultivated a range of breeds to serve

A NEW AND BETTER KIND OF DOG IS NEEDED TO PROTECT AMERICA

By Dr. Carmen L. Battaglia

*Who's
Helping?*



A NEW AND BETTER KIND OF DOG IS NEEDED TO PROTECT AMERICA – WHO'S HELPING ?

multiple purposes with great success. During WWII, America was forced to seriously consider this valuable asset that had been sitting right there under the kitchen table (Fernandez). When America entered that war, Germany already had 200,000 trained military dogs and had provided 25,000 to the Japanese.

After much struggling, on March 13, 1942, the US Army finally moved to have its own program, which they called *Dogs for Defense*. It became the authorizing agency for canine recruitment and training.

Estimations regarding the number of dogs enlisted during WWII are unknown; however, Fairfax Downey (1893–1990), a graduate of Yale who became a writer and well-known military historian, gives a total of 25,000 dogs, others have said it was closer to 50,000 - 300,000 [3]. That realization triggered a massive scramble to fill the void, and by the end of WWII, every branch of the military had invested resources into a K9 recruitment and training program. Dogs from civilian donations were accepted with no regard for breed or sex. Every state set up a recruitment branch with an officer to help facilitate donations for the *Dogs for Defense* effort.

On two separate occasions AKC was asked to help. The first occurred during WWII when the US was obsessed about its preparedness in using police and military K9s. Many AKC dog clubs helped the *Dogs for Defense* effort via their network of breeders which were spread across the country. Now, after two world wars, along with conflicts in jungle warfare in Asia to the arctic and search and rescue missions along our northern and southern borders, there comes the realization that the canine is a difference maker.

The second time AKC was asked to help occurred following the 2016 United States Senate Hearing, which focused on the security of the infrastructure using working dogs. The Senate learned that 80-90% of the working dogs used by this country come from Europe and 50% fail when they get here. At the conclusion of that hearing, Dr. Cindy Otto, one of the Senate witnesses, contacted AKC Board Member Dr. Carmen Battaglia. She asked him if AKC could help by developing a domestic breeding program for working dogs needed by the country. The AKC Board responded and established the AKC Dog Detection Task Force (AKC DDTF) with the goal of addressing the shortage of US-bred, raised, and trained detection dogs. A new and better kind of dog was needed. The fail rate was too high. In order to meet this new need, the DDTF established a major initiative called the AKC Patriotic Puppy Program (PPP) which identifies and works with individuals willing to breed, train, and develop the pups needed to do the many jobs assigned them. The breeders are a collection of people from all age groups and cultures who have the passion to breed dogs and raise puppies to help the country. Patriotic Puppy Program participants are recognizable by

their dedication to make the next generation of pups better. What makes them so special is their willingness to use new technologies and methods that will produce smarter pups with better heart beats and heart rates, more adrenaline when needed, more resistance to disease, and greater tolerance of stress. The methods used by the PPP breeders can be used by any breeder, and that's what makes the program different. The PPP breeders learn how to develop their breeder skills and take advantage of the learning, which is free of charge. Their time and continued interest are the characteristics required.

The PPP welcomes many sporting breeds including Labrador Retrievers and German Shorthaired Pointers, which are often the preferred breeds of detection industry professionals. Other breed participants include German Shepherd Dogs, Bloodhounds, Flat-Coated Retrievers, Golden Retrievers, and other sporting breeds.

The Patriotic Puppy Program emphasizes four pillars to building a stronger domestic source of detection dogs:

1. **Breeding:** Selecting the right parents using pedigree analysis.
2. **Training Accountability:** Participants maintain detailed training records for program advisors to track progress, tailor learning, and evaluate various training methodologies.
3. **Diverse Exposure:** Once vaccinated, pups are given extensive exposure to external environmental stimuli throughout the raising period which includes sounds of large crowds and a variety of dynamic environments.
4. **Placement Opportunities:** Upon successful program completion (usually about one year of age), participants receive assistance in placing their successful graduates with local, state and federal agencies, where they receive advanced specialized training needed to meet the urgent demand for highly skilled detection canines.

Throughout the 8-10 month training period, PPP participants submit monthly training records covering four broad categories of activities. These reports are used to provide tailored advice to the participants that help to establish the effectiveness of different training techniques. Following the successful completion of the

program, participants are encouraged to offer their dogs for sale to state/local law enforcement and other canine detection agencies. [Coile]

Leading the Patriotic Puppy Program is dog breeder and trainer Stacey West. He is the spark plug who meets with and counsels the breeders. He does not get involved with selling the dogs, only in their training and development. He provides much of the necessary support which comes in the form of monthly meetings, hands-on training seminars around the country, personalized training and assistance and access to industry experts. The PPP has a support team of knowledgeable experts who know what federal, state, and local law enforcement



A NEW AND BETTER KIND OF DOG IS NEEDED TO PROTECT AMERICA – WHO'S HELPING ?

agencies want and need in a detection dog. With these resources, the participating PPP breeders rarely have to worry about finding the right job for their puppies.

The AKC is also working with two other organizations. In 2021 AKC partnered with the United States Police Canine Association (uspcak9.com), the oldest and largest police K9 organization in America and shortly thereafter with ESPN. The USPCA partnership involves recognizing the dogs used by the USPCA. The ESPN effort involves the videotaping and reporting on how detection dog training works in the real world. Competition is used to test and keep the officers and dogs sharp. ESPN videotapes the performance and then develops a video program for broadcast so the public can see the competition and understand how and why this program is needed.

Solving the shortage of detection dogs and developing new sources for US-bred, raised, and trained detection dogs involves the collaboration of AKC breeders, outside experts, law enforcement, and private entities who use these dogs on a daily basis. Improved transparency, information, and communication across all parts of the detection dog industry has created more opportunities for the AKC breeders of detection dogs.

In 2024, the AKC Patriotic Puppy Program graduated its 100th detection dog, a yellow Labrador Retriever named K-9 Teddy who was bred and raised by Roxane Dutson of Oak City, Utah. Roxane has been a part of the PPP from its earliest days. K-9 Teddy is now handled by Police Officer Ryan Frost of the Maine Capitol Police and stationed at the State Capitol in Augusta where Teddy also serves as part of the Maine State Police K-9 Explosives Unit.

Roxane Dutson continues to be an active PPP participant, having produced multiple graduates that are working for local, state, and federal agencies across the country. In addition to producing canines for law enforcement detection dog programs, several of her pups have gone on to jobs in the private security industry. Figure 1 shows the successful distribution of PPP efforts by breed and the agencies where these dogs have been deployed.

Observers will find PPP participants at all levels of knowledge from

beginners to professionals, but all are working toward producing better and more trainable dogs. Many of the participants can be found competing in AKC sports such as hunting, agility, field trials, hunt tests, and scent work since many of these AKC events require dogs with drive, trainability, and the willingness to work. The need for these special dogs continues to grow and today the PPP has nearly 200 breeders in 47 states. Most experts believe it is possible for AKC breeders to satisfy all the needs of America via the continued participation and active engagement of breeders whose efforts are aimed at producing detection dogs.

If this article motivates you and you believe you can help by breeding and saving a puppy from a litter, or if you want more information about the program, contact Program Manager, Melissa Ferrell at Melissa.Ferrell@akc.org (919) 816 3577 or visit www.akc.org/edc or <https://www.akcgr.org/issue/78550/>.

References

1. Coile, Caroline, 2023. *Family Dog*, American Kennel Club, New York, New York, pg 8.
2. Fernandez, Amy, 2024. *The Unsung Heroes of FEMA*. The Canine Chronicle, Ocala, Florida, Pg 226-234.
3. Fairfax Downey, *Dogs for Defense: American Dogs in the Second World War 1941-1945* (New York: Trustees of Dogs for Defense, 1955)
4. Ibid, 16.
5. Ibid, 18-21.
6. Ibid, 24. The questionnaire required owners to list their animal's breed, sex, shoulder height, call name, sex, and American Kennel Club registration number and name if applicable. It also allowed for information regarding health, temperament and whether the dog was fearful of loud noises such as guns or storms. The questionnaire also made note that owners were not to receive their animals back unless it was deemed unfit for service, however a provision was made in a later questionnaire if the owners would like their animals back following the end of the war effort. Fairfax Downey's number of 25,000 seems to be correct but higher references such as the figure of 300,00 dogs is given by James W. English's in *The Rin Tin Tin Story* (New York: Dodd, Mead, & Company, 1949), pg.171.

About the Author

Carmen L. Battaglia holds a Ph.D. and Master's Degree from Florida State University. He is co-chair of AKC's Dog Detection Task Force, an AKC Director, judge and researcher, and the author of many articles and several books. He is a well-known lecturer and leader in the promotion of breeding better dogs. Dr. Battaglia is also a popular guest on TV and radio talk shows including several appearances on Animal Planet. His seminars on breeding better dogs, selecting sires and choosing puppies have been well-received by breed clubs. Those interested in learning more about his writings and seminars should visit the website <http://www.breedingbetterdogs.com>

Figure 1.

Agency	# Placed	% of Total
Private Security Firm	66	42%
Local Law Enforcement	56	35%
CBP	6	4%
TSA	5	3%
Univ Police Dept	3	2%
State Law Enforcement	12	8%
ATF	1	1%
Pentagon	1	1%
USDA	1	1%
Capital Police	5	3%
DOD	2	1%
NYPD Bomb Squad	1	1%
Total	159	

Federal	21	13%
State	15	9%
Local	57	36%
Private	66	42%
Total	159	

BREED	Total	%
Labrador Retrievers	103	65%
German Shorthaired Pointers	7	4%
Chesapeake Bay Retrievers	1	1%
German Shepherd Dogs	3	2%
English Springer Spaniels	2	1%
Bloodhound	43	27%
Total	159	

GETTING TO *Know us*



Our club has been around for 70+ years promoting the improvement of the breed. Our individual club members span across decades and generations, and some members have been with the club for decades and generations. Whether members have been with the club for an extended time or joined more recently, the love for our breed brings a camaraderie and extended family that fosters and encourages community, support and positive growth.

**Barbara
STAMPER**

Owner of Barick German Shepherds. Barbara has been a member of GSDC of Atlanta for almost 29 years, since 1.31.97. Barbara and husband Rick bred 42 litters of AKC registered GSDs, five Akita litters, and three collie litters. Barick's bred or owned 17 Champions, three Best in Shows, three GSDCA Selects, and five ROMs. Barick Shepherds' first bred/owned ROM was GCH Breezy ROM with eight champions. One of their most notable dogs is 'Ria' BIS, BISS, SEL EXC GCHB CH Shoal Creek's Sangria V Barick OFA ROM who left her legacy with one litter of eight, three owned by Barick's and the foundation of their program.

Barbara's 50th AKC registered litter is a sentimental breeding because their pedigree was line bred on their foundation female. 'Ria' is the great-great-grand dam on the mother's maternal side of the pedigree, as well as 3x grand dam on both sides of the sire's pedigree. 🐾



BIS, BISS, SEL EXC GCHB CH Shoal Creek's Sangria
V Barick OFA ROM

**Linda
COLBY**

Joined the GSDC of Atlanta in 2025 after relocating to GA. She is our newest member, but she is not new to the breed. As a seasoned GSD owner, breeder, and owner handler, Linda and her late husband Steve bought their first pet GSD decades ago. After losing their pet and obtaining a new GSD puppy, they joined their local club, attended a few dog shows, and yes, they were HOOKED! Their puppy wasn't quite a 'show' dog, so they co-owned a beautiful bitch, CH Brownhill-Kysarah's Zoey ROM, who became their foundation. Their kennel, Colbyhaus Shepherds, was formed in 2008 with 17 litters bred producing 10 Champions, three Am Selects and two Canadian Selects. They also achieved other titles including RN, BCAT and a few HITs, have been parent club members for almost 20 years, and Canadian club members for 15 years. The greatest accomplishment for Colbyhaus is the wonderful families who provided loving homes for their puppies. 🐾



CH Brownhill-Kysarah's Zoey TC ROM

Recent Events & Activities



Our club members were off to an early start in 2026 and did not waste any time getting back to their scheduled dog activities!

- ✓ Clemson Kennel Club Shows (SC) 1.3.26 & 1.4.26 **Krissy** B, BOH, OHG2 & B, BOH
Iceman W, OS & W, OS
Rain W, BW, BBE & W, BW
- ✓ Rubber City Kennel Club Shows (OH) 1.3.26 & 1.4.26 **Style** B, G4 & B, G2
- ✓ Land O'Lakes Kennel Club Shows (MN) 1.2.26, 1.3.26 & 1.4.26 **Sassi** B, G3, B, G1,
BIS, and B
- ✓ Hernando & Clearwater County Kennel Club Shows (FL) 1.8.26 & 1.9.26 **Viper** W,
BW & W, BW and Pasco FL and Tampa Bay KC Shows (FL) 1.10.26 & 1.11.26 W, BW
(**3-pt major**) & W, BW (**3-pt major**)
- ✓ Corpus Christi Kennel Club Shows (TX) 1.8.26 & 1.9.26 **Sassi** B, G1, **RBIS** & B, G2
and 1.10.26 and 1.11.26 B, G2 & B, G4
- ✓ Hernando County Kennel Club Shows (FL) 1.14.26 & 1.15.26 **Sassi** Select & Select



Like a fine wine, this girl keeps getting better with time!

2025 **#1** German Shepherd Dog
All Breed

gcs Kaleef's
CH Sassicaia



Upcoming Events & Activities



- Club meeting - January 31st at 11 am
Call-in
- Club meeting - February 14th (outdoor meeting planned)
Details to follow.
- Scentwork & Tracking Educational Seminar - February 15th at 12 pm
Caney Creek Preserve, Cumming, GA
- UKC Shows - February 27th, 28th & March 1st Jefferson, GA
Entries close Feb 25th <https://www.seaeda.org/>
Day of show entries available: Nosework (pre-entry only), Obedience & Rally also available.
- AKC GSD Specialty - Kentuckiana GSD Club - March 13th
Entries close Feb 25th <http://www.infodog.com>
- Club meeting - March 14th (outdoor meeting planned)
Details to follow. Nominating Committee to be appointed.
- AKC GSD Specialty - MS Gulf Coast GSD Club - March 28th & 29th
Entries close Mar 11th <https://entries.ftshows.com/>
- Club meeting - April 11th (outdoor meeting planned)
Details to follow. Finalize spring shows.
- AKC GSD Specialty - GSD Clubs of Atlanta & N Georgia April 17th & 18th
Entries close Apr 1st valerieharrington123@gmail.com

Tentative Events & Activities

- Conformation practices Feb 22nd & Mar 22nd Details to follow.
- Herding Clinic Details to follow.

Breeder Referral



Coordinator

I offer referrals towards our club members first. If I don't know of any club puppies, I offer names of others local to our area that I know offer a good dog and will stand behind their puppies. And I give no preferences to anyone – I try to be as unbiased as possible.

The below questions are based on my experience as a breeder and owner. My first dog purchase in 1968 was an inbred father/daughter litter, and he had the most titles of any dog in his 5-generation pedigree – a CDX. I will credit him with establishing my love of the breed and we had a lot of fun.

***Questions that I ask callers:

- Have you ever owned a GSD before?
- What area of town do you live in or does it matter how far away the puppy is located?
- Do you have a fenced yard or what is your exercise plan?
- Do you want a puppy or an older dog?
- What do you want to do with your dog – pet, show, performance, etc?
- How did you find out about the club?

*****Questions I advise callers to ask the person with puppies.** Callers frequently know of “puppies” from a friend knows someone who has a litter.

- What health screenings do the parents have, i.e. OFA, DM, etc?
- Make sure you meet the dam of the puppies, if you don't like her leave
- How old is the dam?
- Do they have both parents on site?

I tell everyone that calls – your dog needs a job – if you don't give him one, they will make their own job.

Everyone has their own hot buttons, and these are mine. I've been fortunate to have great mentors over the years. Scootie Sherlock of Caralon Kennels, was my first mentor and was always there for me even after I no longer had a dog from her bloodlines. Find yourself a mentor and then listen!

Learn more about the breed through our parent club and AKC!!

MEET THE BREED



German Shepherd
Dog Club of America (GSDCA)

<https://www.gsdca.org/>



<https://www.akc.org/dog-breeds/german-shepherd-dog/>

TIPS:

• **MEET THE BREEDER**—Don't be put off if a breeder isn't immediately responsive. Some breeders have full-time jobs, and they don't always have available puppies. Be selective. Find a breeder who is knowledgeable and make sure you're comfortable with them. Establish a good rapport with them as they will be an excellent resource and breed mentor for you throughout the life of your puppy. *

• **ASK ABOUT THE PUPPY'S PARENTS**— Get an idea of what the future holds for your dog in terms of temperament and appearance. Breeders should be honest about the breed's strengths and weaknesses and knowledgeable about the genetic diseases that can affect their breed — including what's being done to avoid them. *

• Don't expect to bring home the puppy until it's 8 to 12 weeks of age. A puppy needs ample time to mature and socialize with its mother and littermates. *

German Shepherd Dog Club of America



We highly recommend membership with our Parent club.

It puts you in a position to stay abreast of GSD happenings locally, regionally and nationally.

Multiple membership options are available: Single, Family, Juniors. Requirements for membership options can be located on the parent club's website or can be viewed on the next page of this newsletter.

<https://www.gsdca.org/application-and-info/>



About GSDCA

The German Shepherd Dog Club of America is the AKC and WUSV member club representing the best interests of the breed and its lovers/owners/enthusiasts and exhibitors.

[CONTACT US](#)



The German Shepherd Dog Club of America, Inc., also known as the Parent Club for the GSD, was formed in 1913 & incorporated February 7, 1916.

The purposes for which the Corporation was formed are listed below:

1) To promote the breeding of the German Shepherd Dog;

2) To define precisely and publish definition of the true type, and to urge the adoption of such types on breeders, judges, dog show committees, etc., as the only recognized and unvarying standard by which the German Shepherd Dog is to be judged, and which may in the future be uniformly accepted as the sole standard of excellence in breeding and awarding prizes of merit;

3) To do all in its power to protect and advance the interests of the breed by offering prizes, supporting certain shows, encouraging the development of working qualities and taking any other steps that may seem advisable;

4) To promote its most conspicuous characteristics as Police Dog, War Dog, Red Cross Dog, and Herding Dog, and;

5) To encourage therefore all trial and demonstrations in which those qualities may be shown, so as to interest the public generally, but especially the police and other municipal organizations in our ideals.

Looking for a puppy?



Guidelines for finding the right German Shepherd puppy to match your lifestyle and interests.

[FIND A PUPPY](#)



GSDCA Membership Application

GERMAN SHEPHERD DOG CLUB OF AMERICA, INC.
APPLICATION FOR MEMBERSHIP OR RENEWAL

There are two types of membership. **Regular Members:** Minimum age of 18 years. Must be in good standing with the AKC. Shall subscribe to the Objects of the Club, and abide by the Club's By-laws, the Club's Membership Code of Conduct and the rules and regulations of the AKC. **Junior Members:** Must be 9 years of age and not more than 17 years of age and shall subscribe to the same criteria as Regular Membership with the exception of the requirement to pay dues. Junior members cannot vote, hold office, or serve on committees other than junior committees.

Check your desired membership type: _____ One Year _____ Three Year _____ Five Year

CATEGORY	GSD REVIEW DELIVERY	One Year	Three Year	Five Year	Additional Delivery Charges
Single	Online Only	\$55	\$160	\$265	For Printed GSD Review:
Single	Print & Online	\$75	\$215	\$355	Delivery in Poly Wrap: +\$5.00
Family	Online Only	\$85	\$230	\$385	1st Class Delivery: +\$30.00
Family	Print & Online	\$125	\$325	\$545	Outside United States: +\$24.00

New applicants must receive permission from two current members to list as endorser. New applicants' names will be published 30 days in the GSDCA website Members Only page for comment, after which they must receive an affirmative vote from the Board of Directors to be elected to membership.

New applicants must attest to the following:
I hereby request formal admission as (regular, junior, life) members of the German Shepherd Dog Club of America, Inc., and (I/ascend to the membership, and as a condition of membership, agree to be bound by its Articles, By-laws, Regulations and Rules as such may exist now or may be subsequently amended and adopted and to the **AGREEMENT** set forth below.

Renewing members must attest to the following:
I hereby request renewal of my membership in the German Shepherd Dog Club of America, Inc., and as a condition or renewal of the membership, agree to be bound by its Articles, By-laws, Regulations and Rules, as such may exist now or may be subsequently amended and adopted and to the **AGREEMENT** set forth below.

AGREEMENT: As a condition of membership in the German Shepherd Dog Club of America, Inc. (hereinafter "GSDCA"), the undersigned member(s) agree(s) that, for any cause of action, controversy or claim arising out of or related to membership in the GSDCA, or any action, controversy or claim arising out of or related to the entry, exhibition or attendance, including but not limited to the qualification of the particular entry or an event sponsored or held by the GSDCA, or at the construction, interpretation or effect of this Agreement, or any other action, controversy or claim arising out of the administration of the rules, regulations, procedures, guidelines of the GSDCA or the By-laws of the GSDCA, shall, unless otherwise prohibited by law, be settled by binding arbitration in Albany, New York pursuant to the rules and regulations of the American Arbitration Association then in effect. Notwithstanding the preceding, prior to arbitration of the cause of action, controversy or claim, all published rules, regulations, procedures and guidelines, including those set forth in the By-laws of the GSDCA relating to disciplinary action, shall first be followed. A party may enter the decision of the arbitrator in a court of competent jurisdiction for purposes of enforcement of the decision of the arbitrator.

Membership Information (Please Print): Junior Membership applicants please use parent or guardian contact information
Last name: _____ First Name: _____ Middle Initial: _____ Date of Birth: (Juniors only) _____
Address: _____ City: _____ State: _____ Zip/Postal Code: _____
Country: _____ Telephone: _____ Email: _____

For Family Memberships, provide second member information.
(Family membership consists of: Husband & wife; significant other; parents/adult children (18 and over) living at the same residence.)
Last Name: _____ First Name: _____ Middle Initial: _____
Telephone: _____ Email: _____

What activities do you enjoy with your GSD? (Check all that apply) _____ Agility _____ Conformation _____ Herding _____ House Pet _____ Obedience _____ Rally _____ K9/Working Dog Sport _____ Tracking _____ Scent Work _____ Other: _____ # of dogs owned: (optional) _____ # of litters bred/year: (optional) _____
Occupation: (optional) _____ What other clubs are you currently a member of? _____
Why do you wish to join? (please share) _____
Endorser 1 (Print) _____ Endorser 2 (Print) _____

Applicant/Member Signature: _____ Date: _____
Mail application to: Toni Felt, 4440 Bushholm Rd. N.W., Ft. Lauderdale, FL 33275A with check payable to GSDCA. *DUES ARE NOT TAX DEDUCTABLE*
The GSDCA conducts elections electronically (online). To opt out and receive a paper ballot via USPS check here _____



GSDC of Atlanta Membership Application

Membership Application

Membership Dues 1st Year: \$55 Individual \$65 Household
(Membership Dues Each Year Thereafter: \$40 Individual; \$50 Household) Check/payment must accompany application.
Make check payable to: The German Shepherd Dog Club of Atlanta, Inc.

PLEASE PRINT Last Name _____ First Name _____ Telephone _____
Address _____ City _____
Occupation _____ E-Mail address _____
Second Member (Household Membership Only) Last Name _____ First Name _____ Occupation _____
I/we authorize the GSDC of Atlanta to communicate with us via email unless otherwise indicated by checking the box listed above.

Each Member is encouraged to participate in Club activities. Please circle your areas of interest.
Equipment _____ Telephone _____ Microchip/Tattoo Clinics _____ Publicity _____ Trophies _____
Newsletter _____ Hospitality _____ Training Classes _____ Matches & Shows _____ Library _____

Why do you want to join the German Shepherd Dog Club of Atlanta? _____

Let us get to know you better.....
Circle any areas in which you have experience: _____
Do you belong to any other dog clubs or animal related organization? (i.e. humane societies, welfare organizations, etc.) Please list: _____
Obedience _____ Tracking _____ Conformation _____ Herding _____
Training _____ Agility _____
Do you have any children living at home? _____ If so, what are their names? _____
What other interests, talents or hobbies do you have? _____

Let us get to know your dogs better.... Please complete the back of this form
I/we agree to abide by the ideas espoused by the German Shepherd Dog Club of Atlanta, Inc. I/we agree to raise and show dogs in the true spirit of the breed, and to follow the rules, Constitution and By-Laws of the German Shepherd Dog Club of Atlanta, Inc. and the American Kennel Club.
Signature of Applicant _____ Signature of Applicant _____
Signature of Active Club Member _____ Signature of Active Club Member _____
Requirement for membership: Prospective members shall be required to attend two of the last six club meetings or one club meeting and one club event before submitting an application to the Board of Directors. Names of applicants will be published in the Guardian 30 days prior to membership consideration.
Date Attended _____ Date Attended _____



There are two types of membership: Regular & Junior.

Regular Members (Single or Family): Minimum age of 18 years. Must be in good standing with AKC. Shall subscribe to the Objects of the Club, and abide by the Club's By-laws, the Club's Membership Code of Conduct and the rules and regulations of the American Kennel Club. Regular members may join via a Single or Family membership. Family membership consists of: husband & wife; significant other; parents/adult children (18 and over) living at the same residence. Lifetime Members are Regular Members who have had a continuous membership of 40 years. Lifetime members pay no dues but are eligible to vote and hold office.

Junior Members: Must be 9 years of age and not more than 18 years of age and shall subscribe to the same criteria as Regular Membership with the exception of the requirement to pay dues. Junior members cannot vote, hold office, or serve on committees other than junior committees. Junior Membership Applications:

Please use parent or guardian contact information.

FAMILY APPLICATIONS – Please if possible provide a unique email address for each member. Your email address will be your login to the Members section and emails cannot be shared.

<https://www.gsdca.org/application-and-info/>

Dog Name and Titles earned AKC, WDA, UKC, etc.	Age/ Sex	Spayed/ Neutered?	# of Litters	Breed of dog	Where did you obtain your dog - name of breeder, rescue shelter, etc.

Have you bred or co-bred any litters in the past three years? _____ If so, how many? _____

What is your kennel name? _____

Do you provide a written contract when you sell a dog or puppy? _____

If a person who acquired a dog of puppy from you needed to surrender the dog for any reason, would you take it back? _____

Are you willing to sign the Breeder's Code of Ethics? _____

Anything else you'd like to share with us? _____

<https://www.gsdcatlanta.org/membership.php>

YOUR WAY!

YOUR DAY!

YOUR STAY!

YOUR FUN!

YOUR FAMILY!

YOUR FRIENDS!

YOUR MEMORIES!

Services are FREE!



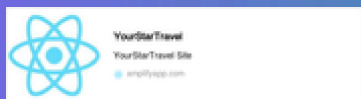
YOUR STAR TRAVEL

Where it's ALL about YOU!



WITH OVER 120 YEARS OF EXTENSIVE TRAVEL PLANNING EXPERIENCE, OUR HIGHLY SKILLED TEAM SPECIALIZES IN RIVER/OCEAN TRAVEL, EUROPEAN, ASIAN, AND AFRICAN DESTINATIONS, CRUISE PACKAGES, ESCORTED TOURS, ALL-INCLUSIVE OPTIONS AND MORE.

YOUR STAR TRAVEL WORKS DIRECTLY WITH PARTNERS TO SECURE THE BEST DEALS. WE CAN TAKE YOU TO CENTRAL AMERICA, ALASKA, CANADA, AUSTRALIA, OR WHEREVER YOUR DREAMS TAKE YOU.



CONTACT US TO PLAN YOUR DREAM VACATION AND NEXT MEMORABLE EXPERIENCE!

WWW.YOURSTARTRAVEL.COM

KARLA@YOURSTARTRAVEL.COM OR 678-462-3226



GREAT on EVERYTHING!!



Louisiana Gumbo



Shug's Sauteed Sprouts

- **Decreased Sodium**
- **Not a GMO**
- **NO Preservatives**



Shug's Shrimp & Spinach Skillet



Shug's Winnin' Crock Pot White Beans



CLICK HERE TO ORDER 
your Seasoning & Cookbook TODAY!!



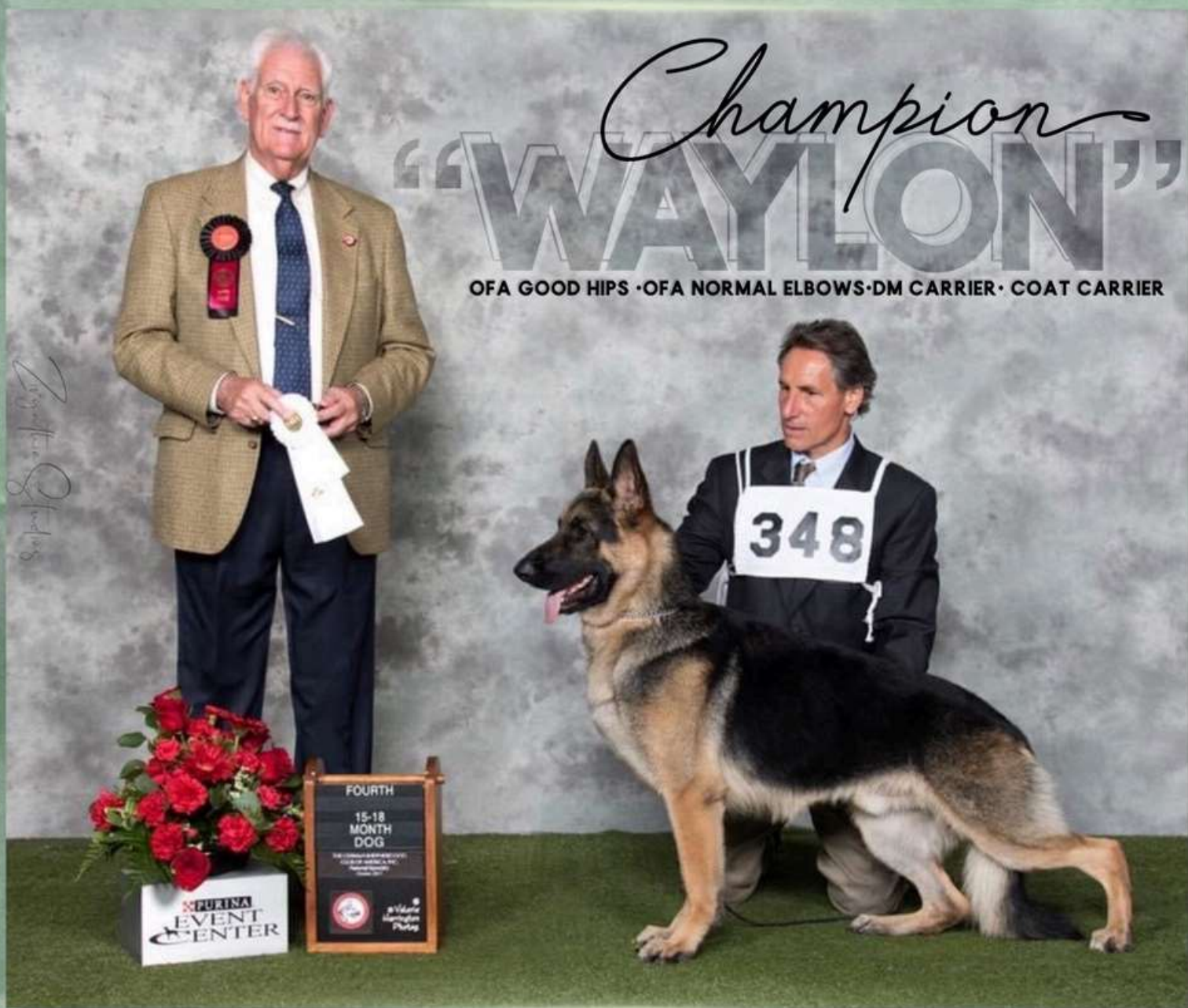
Shug's Kreole Kitchen | BBO Unlimited Ventures
Who is Shug? Well, she's been cooking for over 65 years. Yep, this is very true! Starting at my ...
BBO Unlimited Ventur

JOHN CONELY •423-443-8578 • CONELYJ@AOL.COM

•STUD DOG•

AVAILABLE TO APPROVED BITCHES

STUD FEE:\$500



CARETTI'S
ONE WAY OUT

•CHAMPION• WONDERLAND'S GONE COUNTRY

•STUD DOG•

AVAILABLE TO APPROVED BITCHES



ax

STUD FEE:\$500

2016 GV GCH WOLF CREEK GALAXY
OF MERIVERN OFA

x

BIS GCHB WONDERLAND'S FORCE
OF NATURE OFA



•OFA GOOD HIPPS • OFA NORMAL ELBOWS • DM AT RISK • LONG COAT•

•John Conely • 423-443-8578 • conelyj@aol.com•

DAE CH Colbyhaus Pantagonia Diplomat BCAT TC

CANSELAM/CANCH Pastor Burgos ROMCTEC



GCH ColbyHaus' Dancin' In The Willows HIT

"Tucker"

OFA Excellent Hips*
GS-108648E81M-VPI

OFA Normal Elbow*
GS-EL46713M81-VPI

**Completed @ 81 months / Age 6.5 yrs*



Stud Dog

- à DM Carrier
- à Coat Carrier
- à Frozen Available

Available to
Approved Bitches

2022 National Specialty

Class Dogs- 1st
Veterans 7-9 years



Judge Mr. Michel Chaloux

"I was impressed by the class winner. He was shown in top condition. He was a black and tan male of beautiful breed type. His back was rock solid, and he is a strong and efficient mover covering a lot of ground. This was really a beautiful veteran male. I loved him."

REN & MORGAN LEWIS • 678-646-7555 • RENLEWIS1@GMAIL.COM



MAVERICK

GCHB Cedar Knoll's Malcolm V Van Cleve ROM OFA x GCH CH Ranita's Song of the South PT TC OFA

•STUD DOG• AVAILABLE TO APPROVED BITCHES•

GCH MATCHMAKER'S TOP GUN V HEINERBURG TC DCAT 

•OFA GOOD HIPS•OFA NORMAL ELBOWS•DM CLEAR•COAT CARRIER•BLACK CARRIER•

Grand Champion • Champion • Futurity Best Of Opposite

CARETTI'S BLUES MAN

OFA Good Hips • OFA Normal Elbows • DM Clear • Coat Carrier

•STUD DOG•



AVAILABLE TO APPROVED BITCHES

STUD FEE:\$600

2016 GV GCH Wolf Creek Galaxy Of Merivern OFA

“ZEKE”

x

CH Caretti-Terrwen's Bewitched RQM OFA

JOHN CONELY

423-443-8578 • CONELYJ@AOL.COM

"WILLY" •STUD DOG•

AVAILABLE TO APPROVED BITCHES



2016 GV GCH WOLF CREEK GALAXY OF MERIVERN OFA

X

BIS CH WONDERLAND'S FORCE OF NATURE OFA

• 2x Select Excellent • Grand Champion •

WONDERLAND'S GEORGIA ON MY MIND

• OFA GOOD HIPS • OFA NORMAL ELBOWS • DM CARRIER • COAT CARRIER •
STUD FEE: PLEASE CALL

JOHN CONELY • 423-443-8578 • CONELYJ@AOL.COM